

\* Tweezers is required to assemble accessory parts.

Thank you for purchasing this Rokuhan product.  
This product is a precision product. Please read this instruction manual carefully before operation and operate properly.

## 1 Caution

- Please operate this model with a Rokuhan controller.
- Clean up tracks (metal rails) before operation.
- Remove dirt and dust on wheels.
- Do NOT operate continuously over a long period of time.
- Do NOT change train direction suddenly.
- Stop train first then change direction.
- In the case of derailment or short circuit, turn off the power of controller immediately, unplug the controller, and then eliminate cause of problem.
- Disassembling and modification work could cause damage to this product.
- Storing this product under sunlight or fluorescent light for a long time could cause discoloration.
- Keep this product away humidity, dust and heating devices.
- To avoid shock or electrocution, do not operate this product in wet place or touch with wet hands.
- To avoid injury with sharp parts, please handle with care.
- This product is not recommended that children under 15 years old use unless supervised by an adult.

## 2 Contents of product and Formation

### Formation

① 21-18 ② 35-35 ③ 26-236 ④ 22-18 (Car minimum running radius R190)

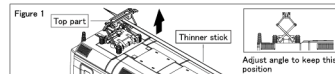
① JNR Series 0 Shinkansen 1-4 cars ② Instruction manual 1-ops ③ Instant lettering 1-ops

\* Combined with T020-3 (sold separately), it is possible to reproduce a 12-car formation similar to the actual car.

## 3 Caution to handle train

### 3-1 How to set pantograph height Applicable model 26-236, 22-18

#### 1. Pull-up top part softly by stick until stop. (See Figure 1)



\* Pantograph will be broken if pull-up too much.

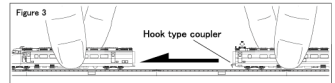
#### 2. Push down top part softly until touch. (See Figure 2)



\* Pantograph will be broken if push down too much.

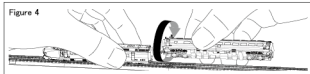
### 3-2 Connect and dis-connect cars

● Connect cars  
Place the cars on the straight track using Relailer (Sold separately). Cramp each car by finger, shift the car (with Hook type coupler) forward and connect both cars. (See Figure 3)



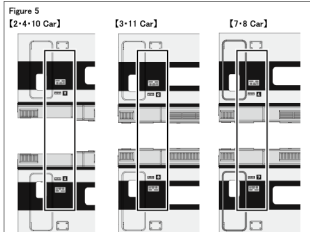
### ● Dis-connect cars

Cramp each car by finger and turn the car (with Hook type coupler) over, then both cars are dis-connected. (See Figure 4)



## 4 How to apply Instant lettering (For advanced modeler)

This signboard instant lettering can be attached on T020-3 (sold separately) as desired. Remove any dirt or dust from the surface to be attached and place it on the car body, as shown in Figure 5. After determining the position, rub gently to ensure it does not shift, transfer, and attach.



## 5 Accessories (Sold separately)

### Room light Applicable model - All cars

You can install the room lights (sold separately) for this product in all cars. For details, please refer to Figure 6 and check the interior light or DCC decoder type room light (A059) compatible with each car. Install it referring to the instruction manual that comes with each.



## 6 Maintenance

- If the car does not run, check that the feeder cable and outlet are plugged in accurately, check the position of the controller's power switch and direction switch, and check if the batteries are forgotten or inserted incorrectly.
- If the car does not run smoothly, dirt may be on the wheels or tracks. Dip a cotton swab or dry cloth into a commercially available rail cleaner and clean the wheels and tracks.
- Be careful not to use excessive force when cleaning the wheels.
- During maintenance, be careful not to lose or damage etching parts, precision parts, installed parts, etc.

## 7 Trouble and repair

- Any trouble, accident, or injury caused by misuse, disassembling and modification of this product are not responsibility of Rokuhan. And Rokuhan does NOT accept repair requests of any products which have been disassembling or modified.
- Product specification and appearance are subject to change without prior notice.
- Available only as completed product.
- Contact Rokuhan customer service if you have any questions about this product.

### ⚠ Caution (Please Read carefully)

- Please put track on a flat surface rail side up. Use of excessive force during assembly or disconnecting the track pieces could cause damage to joints and rails.
- Please make sure rails are placed correctly before operation. Otherwise trains could be derailed or damaged.

## 1 Connect the tracks!

Set tracks on a flat table referring to the figure shown below.

\* Please do not connect the tracks while they are floating.

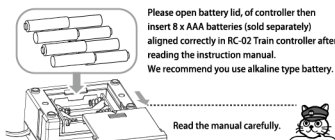


\* The type and number of tracks differ depending on the starter set.

Place each tracks **horizontally, straight, on a flat table**, and push them together firmly until they click without a gap.



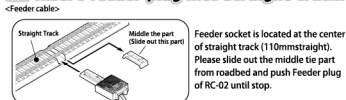
## 2 Set controller!



Please open battery lid, of controller then insert 8 x AAA batteries (sold separately) aligned correctly in RC-02 Train controller after reading the instruction manual. We recommend you use alkaline type battery.

Read the manual carefully.

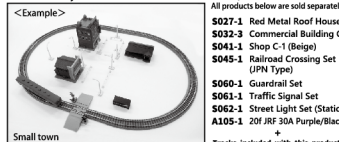
## 3 Insert feeder plug into straight track!



## 4 Let's place the structures!

Read the manual for the car in this starter set, and attach parts on the shell as shown.

<Example of combination with separately sold structures - Easy Diorama >

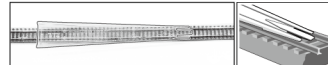


Even in a small space, with tracks, you can create a simple diorama by placing the structures!

We handle other types of structures as well!

## 5 Set cars on the track!

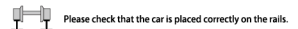
### 1. Put trailer on the straight track 110mm as shown on the below figure.



### 2. Set a car on the relailer and slide down car carefully by hand without derailling.



Cars vary depending on the type of starter set. The above image uses KiHa52 as an example.



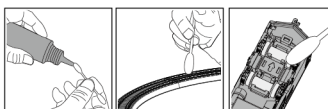
## 6 Make car run!



\* If the train does not run smoothly, metal rails or wheels may be dirty. Please wipe out dirt of metal rails and wheels by rail cleaner with soft cloth referring to 7-1.

## 7 Let's Clean up!

Clean up regularly metal rails and wheels of cars with rail cleaner before and after play. Otherwise, it could cause trouble.



## 8 Troubleshooting

Check followings issues before ordering repair.

Problem	Cause	Correction
Train does not run smoothly.	Metal rails are dirty. Wheels are dirty.	Remove the dirt with cleaner.
Train does not work.	Trains are derailed, especially motor car.	Set a train proper on the rails.

## 9 ROKUHAN H.P.

There are plenty of ROKUHAN 2-gauge product lineups, layout examples, and new arrival information on the website. Please check it out!

<http://www.rokuhan.com/>



There is information at the direct sales store in ROKUHAN showroom.