

Thank you for purchasing this Rokuhan product.
This product is precise. Please read this instruction manual carefully before operation and operate properly.

1. Caution

- Use only a Rokuhan controller to operate this product.
- Clean track (Metal rails) before operation.
- Remove dirt and dust on wheels.
- Do not operate continuously over a long period of time.
- Do not suddenly change train direction. Stop train first then change direction.
- In the case of derailment or short circuit, turn off the power of controller, unplug the controller, and then eliminate the cause of problem.
- Disassembling and modification could cause failure of this product.
- Storing this product in direct sunlight or fluorescent light for long time could cause change in color.
- Store and operate this product in dry dust free locations, away from sources of heat.
- To avoid shock or electrocution, do not operate this product in a wet location or operate with wet hands.
- This product includes sharp parts. Handle with care.
- Handle tools with care.
- This product is not recommended for use by children under 8 years old unless supervised by an adult.

2. 50 Passenger car consists

2-1. Common accessories



Instruction manual ... 1 pc.

3 車両の取り扱いについて

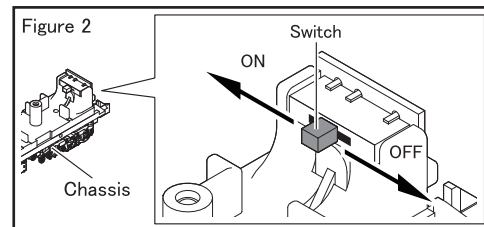
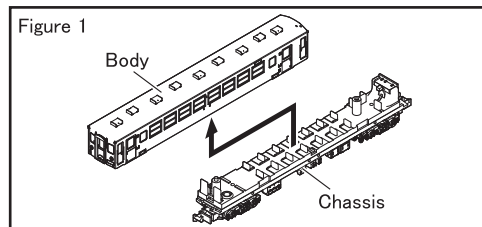
3-1. Taillight

OHAFU 50

お好みでテールライトを点灯/消灯することができます。下記手順に従って、スイッチを切り替えてください。

①図1を参考にボディを真上に引っ張り取り外します。

②図2を参考にスイッチを切り替えることで、テールライトの点灯/消灯を選択できます。



③手順①と逆の手順でボディと床下部を取り付けてください。

3. Accessories (Sold separately)

4-1. Room light

All cars

“A009 Room light type A” (Sold separately) which is LED interior lighting module for passenger car can be installed in all of these sets. For more information, see the instruction manual for “A009 Room light type A”.

5. Trouble shooting

Check followings before ordering repair.

Problem	Cause	Correction
A train does not run smoothly, and lights flicker.	There is dirt on rails.	Remove the dirt with cleaner and cloth.
	There is dirt on wheels.	Remove the dirt with cleaner and wheels.
Trains do not run.	A train derails.	Set the train properly on track using rerailer.
	Track is disconnected.	Connect each track correctly.
	Narrow feeder cable is not connected to power feed point and the socket for feeder cable.	Turn off the main power switch and set direction switch “O” and speed control dial “MIN”. Then connect the narrow feeder cable to power feed point and the socket for feeder cable.
	The main power switch is “OFF”.	Turn the main power switch “ON”.
	The circuit breaker has tripped in the controller.	Turn off the main power switch and set direction switch “O” and speed control dial “MIN”. Then eliminate the cause of trouble and turn on the main power again.
	Direction switch is “OFF” or “O”.	Set the direction switch “FWD” or “REV”.
Trains do not run (Battery use)	Batteries are not installed.	Install batteries. (Alkaline batteries are recommended.)
	The orientation of the batteries is incorrect.	Install batteries correctly.
	Batteries are dead.	Replace batteries with new batteries.
Trains do not run (AC adapter use)	AC adapter is not plugged in or not connected to the socket for AC adapter.	Turn off the main power switch, set direction switch “O” and speed control dial “MIN”. Then plug in AC adapter and connect to the socket again.

6. Trouble and repair

- The user is responsible for any trouble, accident, or injury caused by misuse, disassembling, or modification of this product. Rokuhan will not repair a product which has been opened, taken apart, or modified.
- Specification and appearance of our products are subject to change without prior notice.
- 弊社は、部品の販売はしていません。
- Contact Rokuhan customer service if you have any questions about this product.