



* Razor blade and tweezers are required for putting self-adhesive sheet included with this product on these cars. * Locomotive is required for operation.

T006-1 JNR 14 Limited Express Passenger Car Basic Set

T006-3 14 700 Limited Express Passenger Car Europa 6 Cars Set

T006-4 14 Limited Express Passenger Car Resort 4 Cars Set

Common instruction manual

Thank you for purchasing this Rokuhan product. This product is a fine scale model. Handle with care to avoid damage. Please read this instruction manual carefully before operation and operate properly.

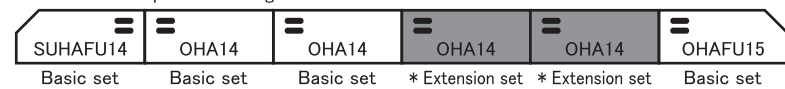
1. Caution

- Use only a Rokuhan controller to operate this product.
- Clean track (Metal rails) before operation.
- Remove dirt and dust on wheels.
- Do not operate continuously over a long period of time.
- Do not suddenly change train direction. Stop train first then change direction.
- In the case of derailment or short circuit, turn off the power of controller, unplug the controller, and then eliminate the cause of problem.
- Disassembling and modification could cause failure of this product.
- Storing this product in direct sunlight or fluorescent light for long time could cause change in color.
- Store and operate this product in dry dust free locations, away from sources of heat.
- To avoid shock or electrocution, do not operate this product in a wet location or operate with wet hands.
- This product includes sharp parts. Handle with care.
- Handle tools with care.
- This product is not recommended for use by children under 8 years old unless supervised by an adult.

2. 14 Passenger car consists

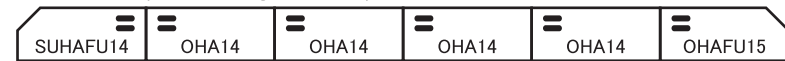
Consists

T006-1 JNR 14 Limited Express Passenger Car Basic Set

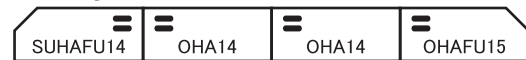


* Basic 6-cars train can be made by adding "T006-2 JNR 14 Limited Express Passenger Car Extension Set" (Sold separately) as the figure above.

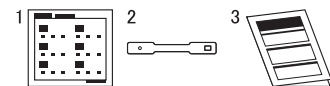
T006-3 14 700 Limited Express Passenger Car Europa 6 Cars Set



T006-4 14 Limited Express Passenger Car Resort 4 Cars Set



Accessories included in each set



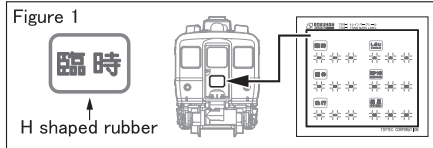
1. Train reporting and identification mark self-adhesive sheet 1 pc
* "T006-1" includes special self-adhesive sheet.
"T006-3" and "T006-4" includes common self-adhesive sheet.
2. Tool to assist in operating switch 1 pc
3. Instruction manual 1 pc

3. Self-adhesive sheet and accessories (Sold separately)

3-1. How to put self-adhesive sheet on cars (SUHAFU14, OHAFU15)

Cut a self-adhesive sheet along the lines on the sheet and put on a car as following figure 1. Do not cut the gray frames off. (The gray frames simulate "H shaped rubber gasket holding signage in place on car side".)

* The sheet in the figure 1 below is for "T006-1 JNR 14 Limited Express Passenger Car Basic Set".



3-2. Room light

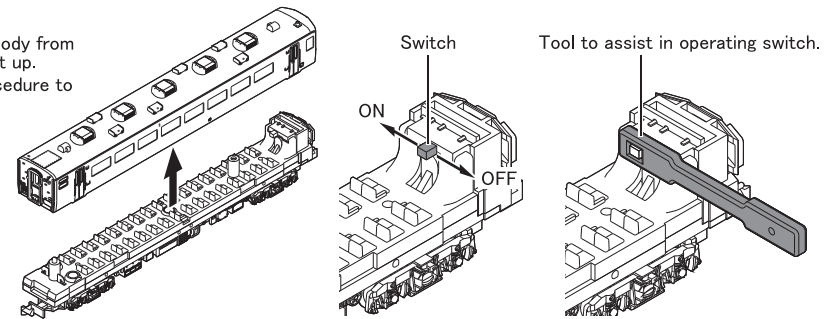
"A009 Interior light type A" (Sold separately) which is LED interior lighting module for passenger car can be installed in all of these sets. For more information, see the instruction manual for "A009 Room light type A".

4. Light

- The light is turned off by moving the switch as shown in the figure 2 below. (SUHAFU14, OHAFU15)
If it is difficult to switch on or off after installing the light, use the tool to do this.

Figure 2

To remove the body from the chassis, lift it up.
* Opposite procedure to assemble.



5. Trouble shooting

Check followings before ordering repair.

Problem	Cause	Correction
A train does not run smoothly.	Track is dirty.	Remove the dirt on track with a clean cloth and rail cleaner.
	Wheels of locomotive are dirty.	Remove the dirt on the wheels.
Trains do not run at all.	A train derailed.	Set the train properly on track using rerailer.
	Cable for main power is not connected.	Set all switches of controller as default and connect the cable of main power again.
	AC adapter is not plugged in or not connected to the socket for AC adapter.	Set all switches of controller as default, plug in AC adapter, and connect to the socket again.
	The circuit breaker has tripped in the controller.	Turn off the main power switch and set all switches as default. Then eliminate the cause of trouble and turn on the main power again.
	Track is not connected correctly.	Connect track correctly again.
	Feeder cable is not connected correctly to power feed point and the socket for feeder cable.	Connect the feeder cable again correctly.
	The speed control dial of controller is "MIN".	Set the speed control dial more than "MIN".
	The direction switch of controller is "OFF".	Set the direction switch "FWD" or "REV".
	The main switch of controller is "OFF".	Set the main switch "ON".
	Batteries are not installed. * Battery use	Install batteries. (Alkaline batteries are recommended.)
The orientation of the batteries is incorrect. * Battery use	Install batteries correctly.	
Old batteries are used. * Battery use	Replace the batteries with new batteries.	

6. Trouble and repair

- The user is responsible for any trouble, accident, or injury caused by misuse, disassembling, or modification of this product. Rokuhan will not repair a product which has been opened, taken apart, or modified.
- Specification and appearance of our products are subject to change without prior notice.
- Contact Rokuhan customer service if you have any questions about this product.

ROKUHAN TOYTEC CORPORATION
7-27, NUMAWADA, TOCHIGI-CITY,
328-0042, JAPAN.
TEL : 81-282-20-2365
URL : <http://www.rokuhan.com/english/>