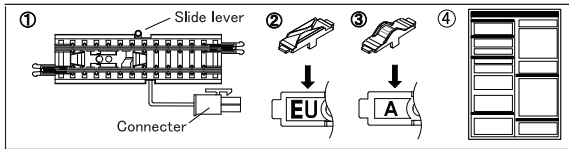


Thank you for purchasing this Rokuhan product. Please read this instruction manual and the cautions on the package carefully before operation and operate properly.

1. Caution

- For best results, connect and disconnect the track on a flat surface. To avoid damage to rail joiner and rail, do not twist or use excessive force and large angles when assembling your track.
- Check your track is connected correctly before running your train. Each rail joint should be flush no humps. If a rail is not flush, the train could derail and could cause damage to your train or track.
- Handle the cord with care to avoid breaking or short circuit.
- Remove dirt from the rail with a rail cleaner before use. Dirty track is evident in jerky movement of your train and headlights that flicker. The power cannot reach the engine if track and wheels are dirty.
- Do not store in a high-temperature/humidity area or away from source of heat. Also be careful with chemicals such as thinner to avoid deformation.

2. Parts list

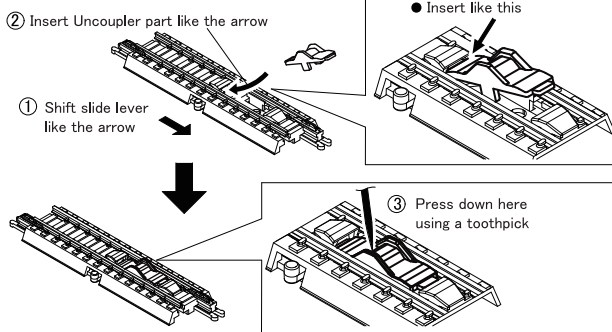


- | | | |
|--|-------|------|
| ① Uncoupler (body) | | 1 pc |
| ② Uncoupler part for EU coupler (marked EU) | | 1 pc |
| ③ Uncoupler part for Arnold coupler (marked A) | | 1 pc |
| ④ Instruction manual | | 1 pc |

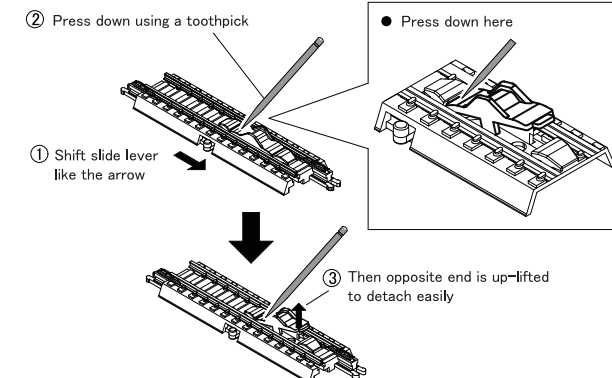
3. How to attach & detach Uncoupler part

- Arnold uncoupler part (marked A) is mentioned in this case.
- EU uncoupler part (marked EU) can be handled in the same manner.

3-1 How to attach Uncoupler part



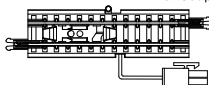
3-2 How to detach Uncoupler part



4. How to operate Uncoupler part (up & down)

4-1 Operate by hand

Shift lever to this side, then Uncoupler part is low-down. Shift lever to this side, then Uncoupler part is up-lifted.



4-2 Operate by Rokuhan controller

Use Rokuhan controller RC03 or Rokuhan turnout switch C002, to operate Uncoupler part (sold separately).

5. Arrange coupler

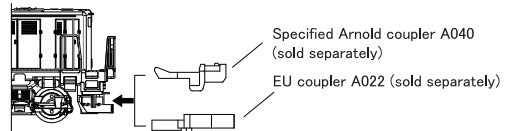
- ※ Rokuhan locomotive DD51 is mentioned in this case as one of motor cars.
- Please arrange specified Arnold coupler A040 (sold separately), to enable uncoupling Arnold coupler.
- Please arrange long type EU coupler A022 (sold separately), to enable uncoupling EU coupler.

6. Setting coupler

6-1 Select coupler

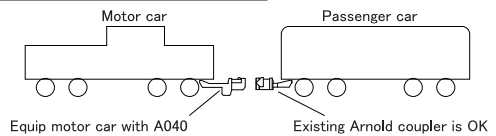
※ Rokuhan locomotive DD51 is mentioned in this case as one of motor cars.

- Detach normal coupler from DD51, then attach specified coupler onto DD51 like this.

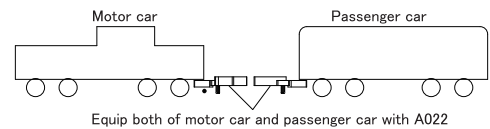


※ Pay attention not to cause up-side-down.

6-2 Set Arnold coupler A040

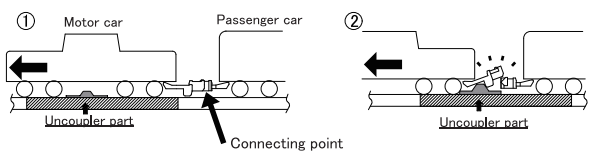


6-3 Set EU coupler A022



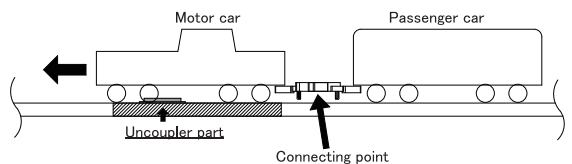
7. How to uncouple

7-1 How to uncouple Arnold coupler A40



- Adjust motor car speed to place motor car on the Uncoupler body.
- Up-lift Uncoupler part. Re-start running slowly and connecting point will hit Uncoupler part. Then uncoupling will happen.

7-2 How to uncouple EU coupler A022



- Adjust motor car speed to place motor car on the Uncoupler body.
- Up-lift Uncoupler part. Re-start running slowly and connecting point will hit Uncoupler part. Then uncoupling will happen.

8. Trouble and repair

- The user is responsible for any trouble, accident, or injury caused by misuse, disassembling, or modification to this product. Rokuhan will not repair a product which has been opened, taken apart, or modified.
- Specification and appearance of our products are subject to change without prior notice.
- Contact Rokuhan customer service if you have any query.