

REVERSE LOOP CONTROLLER Instruction manual

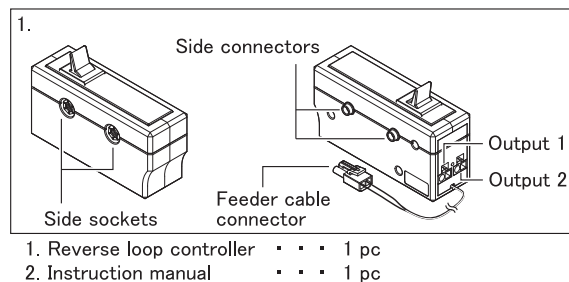
* 2 pcs of feeder cable and 2 pcs of Insulated rail joiner are required. Prepare it before use.

Thank you for purchasing Rokuhan product.
Please read this instruction manual and the back side of the package before use.

1. Caution

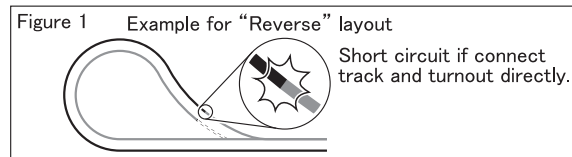
- Connect Reverse loop controller only to Rokuhan controller. Reverse loop controller may not work correctly or it may be a cause of breakdown if other brand controller is used.
- Do not switch the Reverse loop controller when a train is on insulated rail joiner to avoid short circuit.
- Store and use this product in dry dust free locations, away from sources of heat to avoid breakdown.
- Do not disassemble Reverse loop controller.

2. Parts list



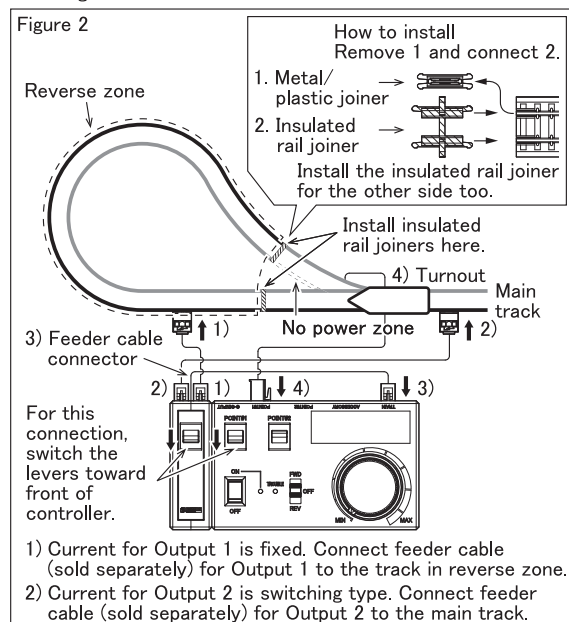
3. Connecting and wiring

“Reverse” is a loop and P shaped layout. However, if the track is connected to the turnout directly, it will short out. (Figure 1)



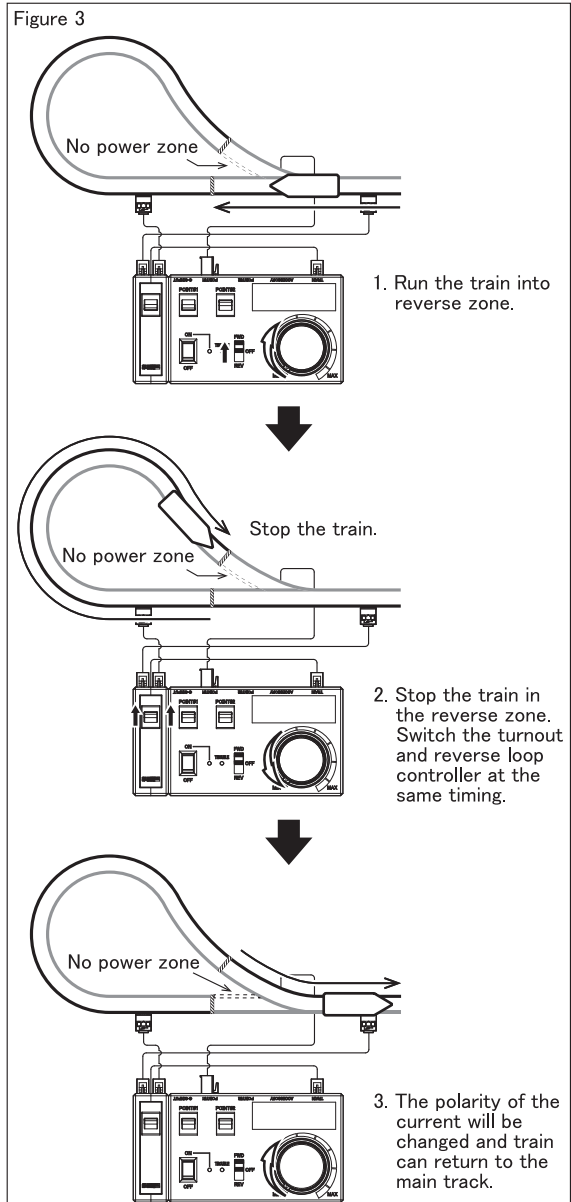
3-1. How to connect to “Reverse” layout

1. Turn off the Rokuhan controller. Connect Reverse loop controller and Rokuhan controller according to the Figure 2.



4. Operate with “Reverse” layout

1. Operate train as Figure 3 in the “Reverse” layout.
* The “Reverse” layout in Figure 3 is one of examples.



5. Trouble and repair

- The user is responsible for any trouble, accident, or injury caused by misuse, disassembly, reassembly or modification to this product. Rokuhan does not repair a product which has been opened, taken apart or modified.
- Specification and appearance of our products are subject to change without prior notification.
- Contact the following Rokuhan customer service if you have any query.

ROKUHAN
JAPAN
TOYTEC CORPORATION

7-27, NUMAWADA, TOCHIGI-CITY, 328-0042,
JAPAN.
TEL : 81-282-20-2365
URL : <http://www.rokuhan.com/english/>